

KILOVIEW® NDI Recorder

录制 信源

项目名称 默认项目

IDLE

Unlock Lock

存储

E:// 137GB / 736GB

实时写入 当前: 0.00MB/s

时间	写入量

性能评估

性能

上行: 85.00KB/s 下行: 7.68MB/s

时间	上行	下行

CPU 27.00 % 温度 46.00 °C

内存 85.00 % GPU 0.00 %

授时

14:58:41.71

2022年2月26日 星期一

一键授时

授时服务器 time.windows.com

# NDI Recorder

1. Download and install NDI Recorder (Windows 10)
2. Enable NDI Recorder program on your desktop or application
3. Click "Later" when you see the authorization prompt after enabled the NDI recorder. (Note: free trial only available for 30 days). After expired, copy the device code and send to your sales consultant or agent to purchase License.
4. Fill in the authorization code once received. After authorization, it can be used within the authorized period on your current PC.

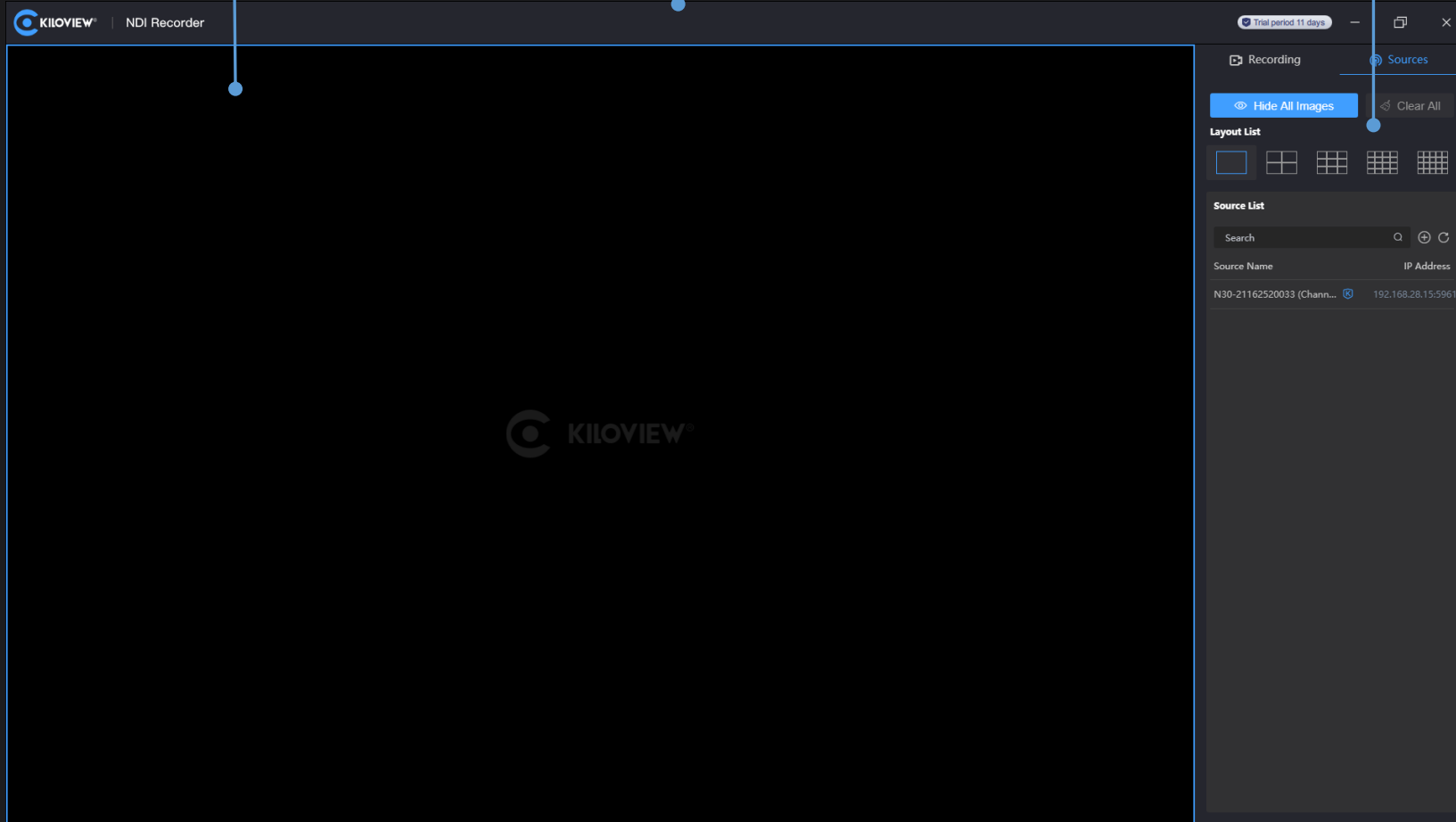
Note: The authorization code is bound to the machine code of your current hardware CPU , You need to purchase the new license when you replace your CPU or PC.

# 1. Open the NDI Recorder

Source preview

Open the NDI Recorder software and enter the recording information page

Configuration and information




The screenshot displays the KIIOVIEW NDI Recorder software interface. The main area is a large black rectangle for source preview. The top navigation bar includes the KIIOVIEW logo and 'NDI Recorder' text. A 'Trial period 11 days' badge is visible in the top right. The right sidebar contains a 'Recording' section with 'Hide All Images' and 'Clear All' buttons, a 'Layout List' with grid icons, and a 'Source List' with a search bar and a table of source information.

Source Name	IP Address
N30-21162520033 (Chann...	192.168.28.15:5961

## 2. Add NDI source and preview

Source preview

Click source, auto discovery all the NDI sources in current network.



The screenshot shows the KILOVIEW NDI Recorder interface. The main window displays a video preview of a tropical landscape with palm trees and a blue sky with clouds. The preview is labeled "Unsyncronized" and "113.33Mbps". The right sidebar contains a "Sources" panel with a "Recording" indicator and a "Sources" tab. The "Sources" panel includes a "Layout List" with a grid selection, a "Source List" with a search bar and a plus icon, and a table of discovered NDI sources.

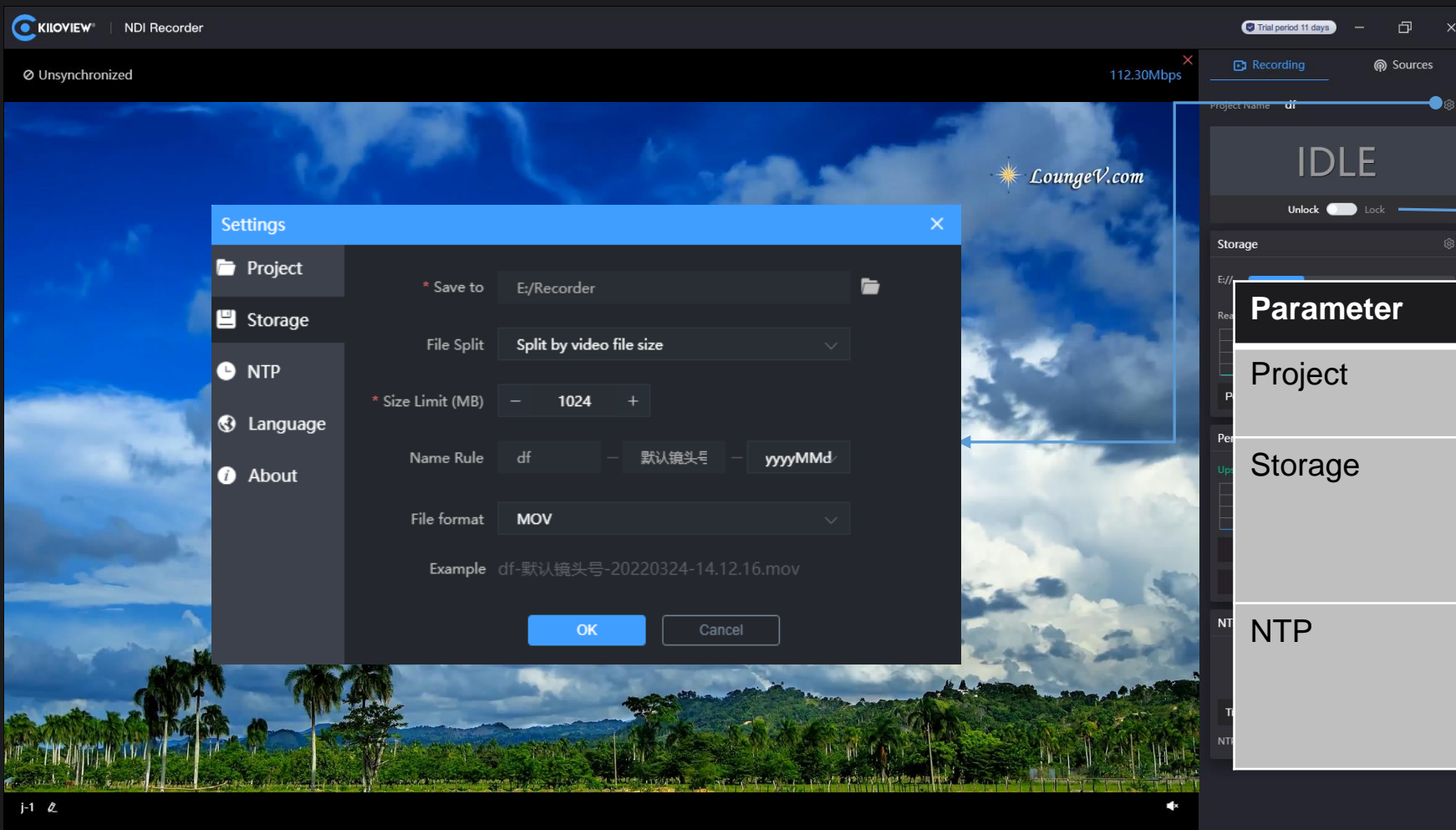
Source Name	IP Address
N30-21162520033 (Chann...	192.168.28.15:5961

Preview window selection

To add NDI sources manually

List of NDI sources

### 3. Recording parameter and storage parameter configuration



Open/Close recording

Parameter	Function
Project	Name the currently recorded project name
Storage	Configure the current recording storage location, recording file size or duration, name rules and file format.
NTP	Configure NTP server address, to keep it consistent with the NTP server of the NDI video source



# 4. Start recording

It will display "synchronized" when NTP setting is successful.

Start/stop recording, running time

Current storage space and remaining space

Storage speed per second

The performance of the hardware device

System time

Click to complete one-key NTP

Set the current screen name

audio switch

**Note:**

1. You need to drag the specified NDI video source into the video preview box on the left if you need to record it.
2. You can configure 1/4/9/16/20 preview window when you need to record multiple NDI sources.
3. Multi-window only means multi-view preview and simultaneous recording, each NDI video source is recorded as a separate video file.
4. After Beta version expired, it does not support to purchase a license. You need to download the official version. After License, it supports up to 20 channels simultaneous recording.